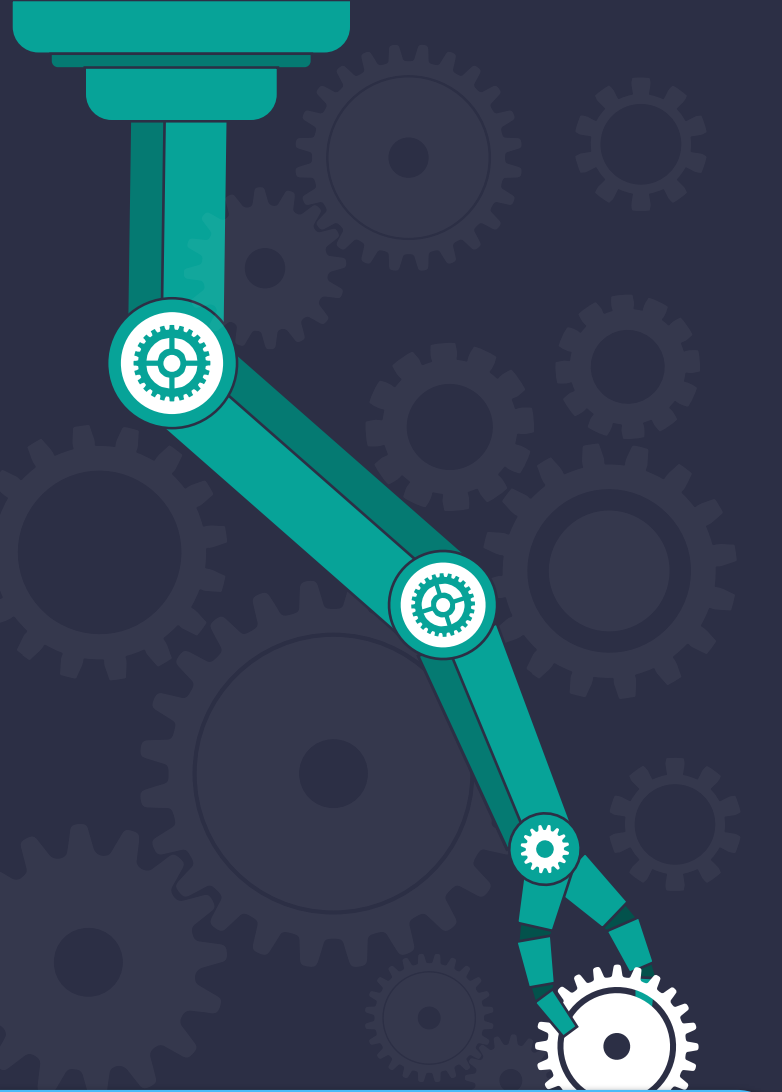


User Manual



MopBot

Content

01

Product description

02

Visualization

03

Empty storage box

04

Changing the battery

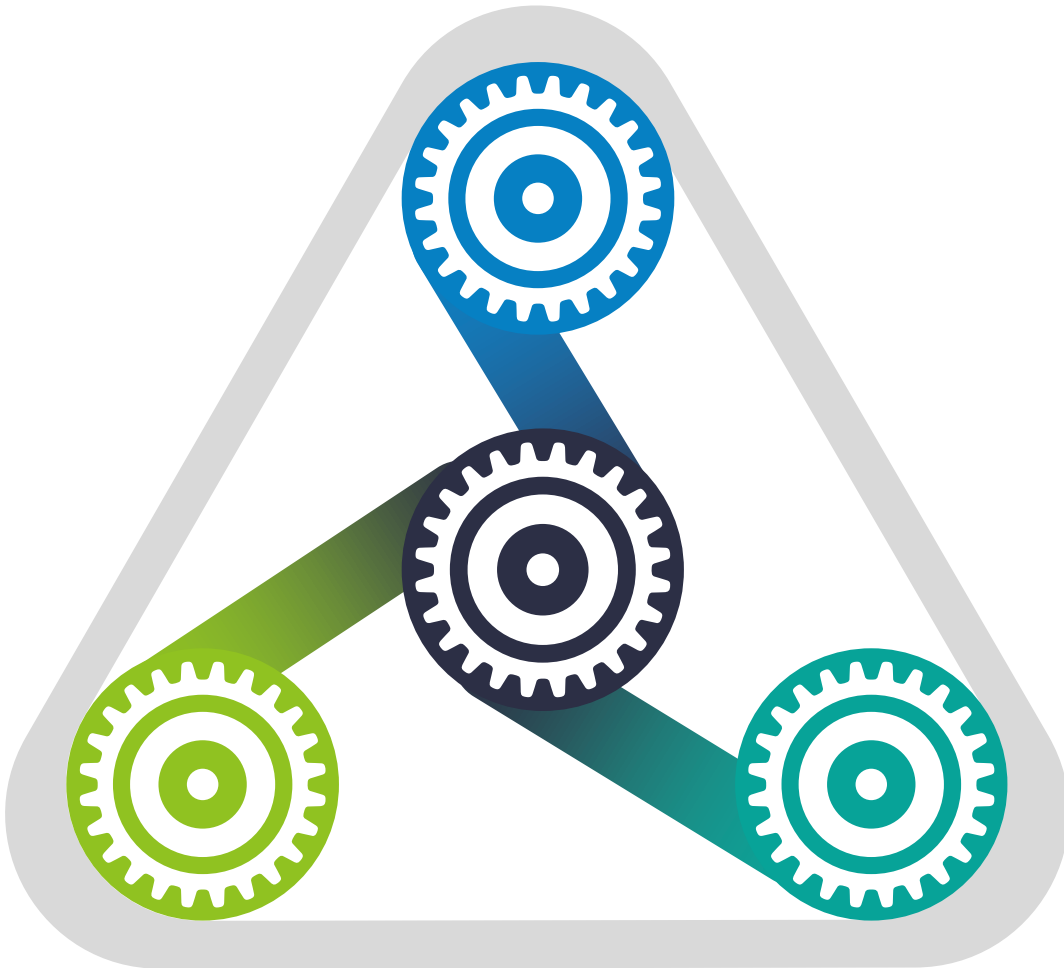
05

User warnings

06

Contact

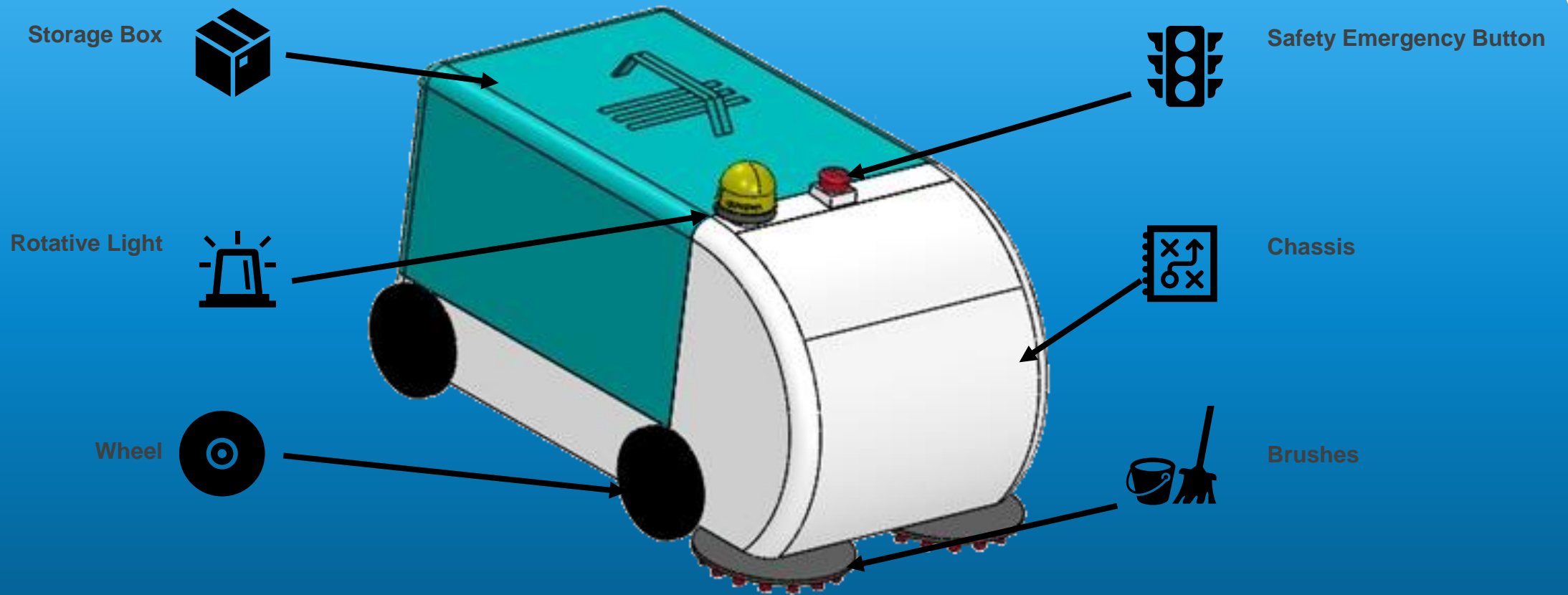
Product description



The MopBot is an autonomous cleaning robot and is designed to clean large indoor areas. The MopBot can collect 25 liter of rubbish and dust inside of the storage box. The two vertical brushes at the frontside of the MopBot are making it able to transport the rubbish to the inside of the robot. Dust and small rubbish are collected using a powerful vacuum system. The battery life of the MopBot is over 180 minutes.

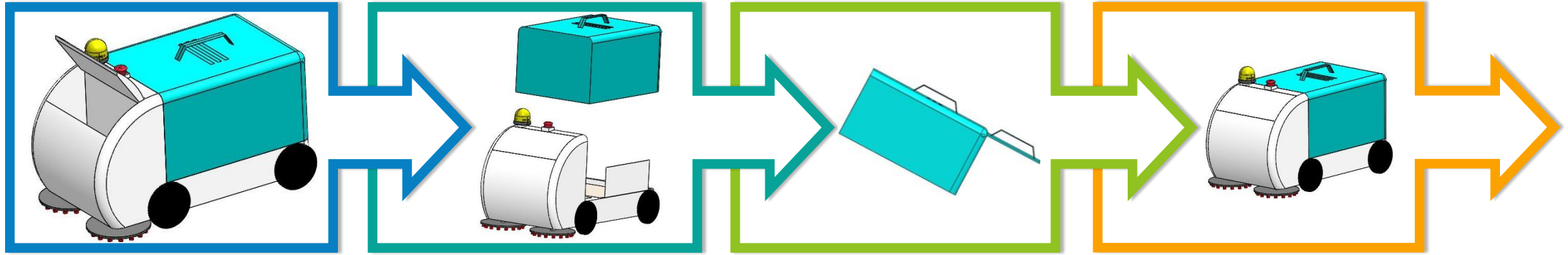
The MopBot is provided with all safety requirements. The MopBot uses different sensors to guarantee the safety of the users and bystanders.

Visualization



Industrial automation

Empty Storage Box



1st

Turn off the Robot

To make sure nobody gets hurt or the robot gets damaged the robot must be turned off. The power button is located on the front of the chassis. The customer just needs to open the small door and click on the button.

2nd

Pull the Box

To remove the box out of the chassis, push the box vertically using the handler.

3rd

Incline the Box and Open the Back Door

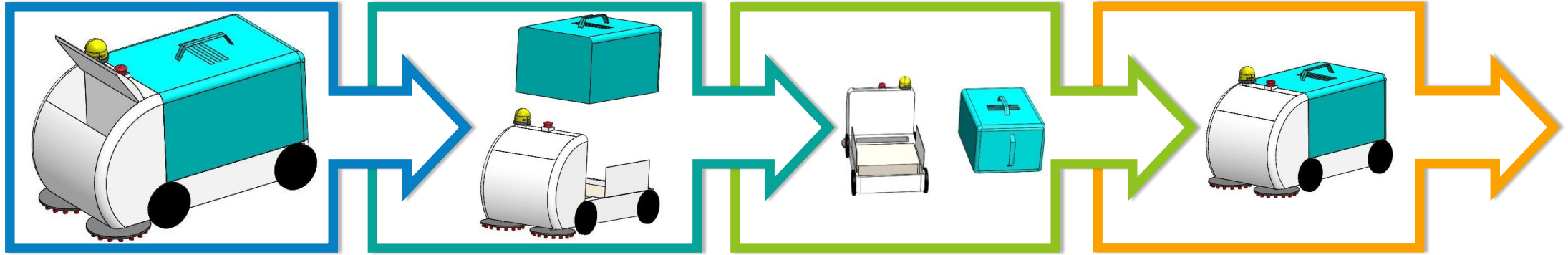
Inclining the box and open the door in order to let the trash slide out of the storage box. Make sure you put the trash on a garbage can and if possible, separate the trash to recycle.

4th

Place Back the Storage Box

Reattach the storage box to the chassis and turn on the MopBot. Now the robot is ready to be used again.

Charging the Battery



1st

Turn off the Robot

To make sure nobody gets hurt or the robot gets damaged the robot must be turned off. The power button is located on the front of the chassis. Open the small door and click on the button.

2nd

Remove the Storage Box

To be able to recharge the MopBot batteries, the storage box needs to be taken out of the chassis to access the batteries.

3rd

Connect the Batteries with the Charger

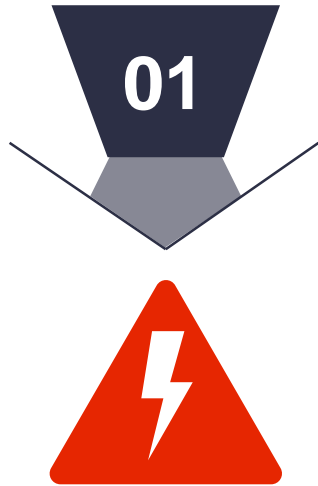
Connect the batteries with the charger and wait until they are charged again.

4th

Place Back the Storage Box

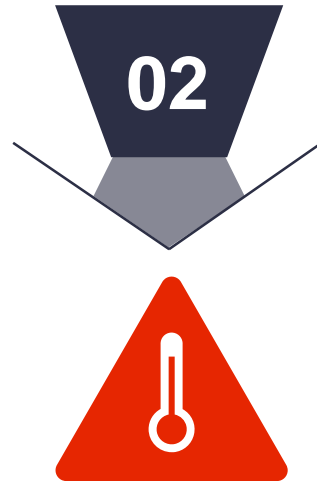
Reattach the storage box to the chassis and turn on the MopBot. Now the robot is ready to be used again.

User warnings



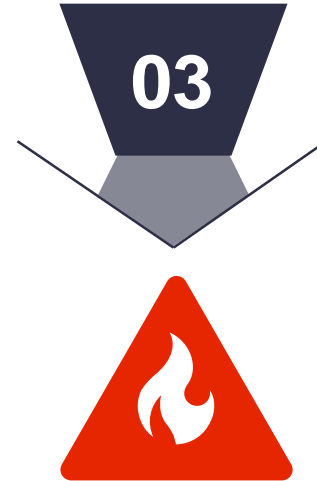
Danger of electric shocks

Don't remove the batteries or any devices during charging.



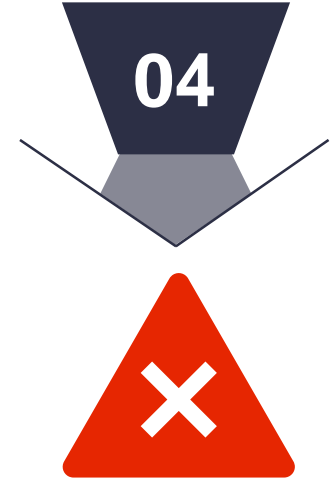
Heat

Surface can become hot depending on the usage condition.



Fire

Keep fire away from the batteries in the MopBot.



Water

Water damages the system.

Contact

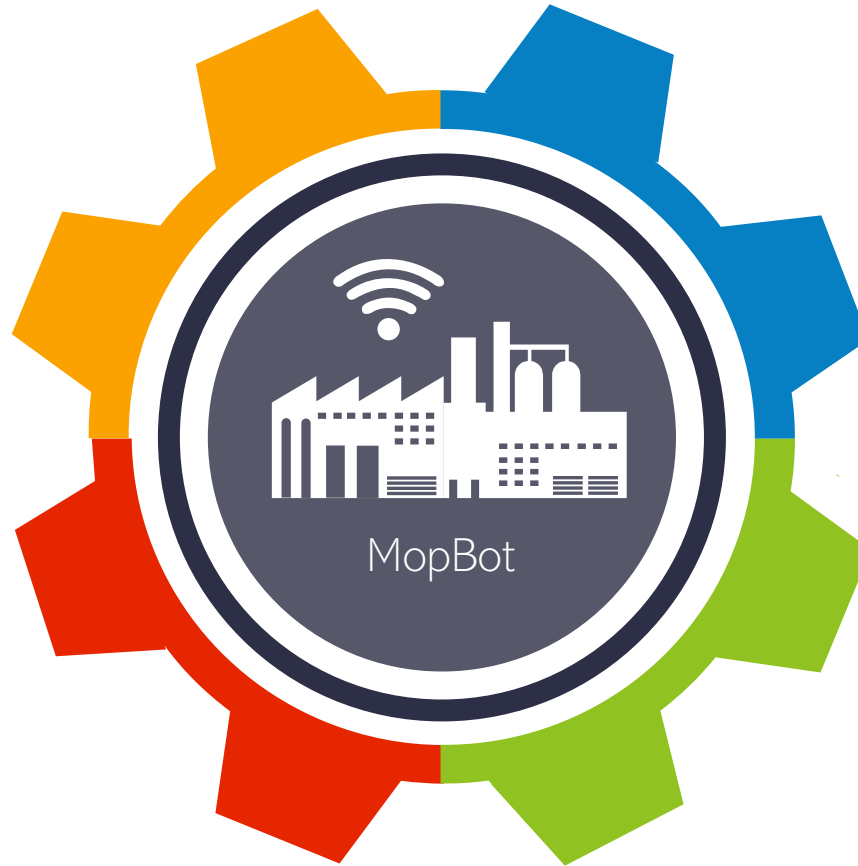
Phone number

+351 22 83 405 00



Email

mopbot@gmail.com



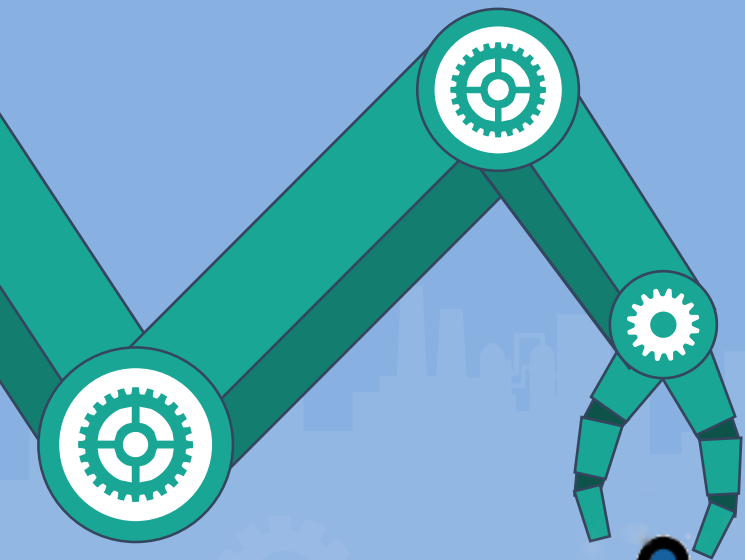
Fax

+351 22 83 211 59



Location

Rua Dr António Bernardino de Almeida,
431
4249-015 Porto
Portugal



MOPBOT

